



**COMBINATION NIPPLES**

CRIMPTEK - WELD BEVEL  
STEEL & SS 316

**FEATURES & APPLICATIONS:**

• **General Uses:**

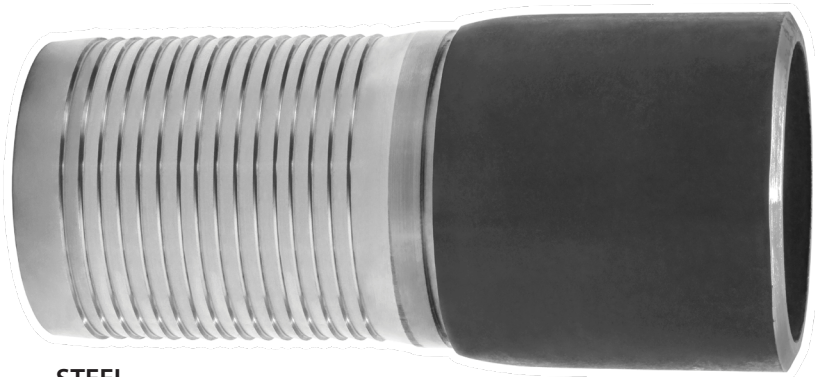
Working pressures may vary with type and clamping system used to install couplings.

Combination Nipples are recommended for low pressure discharge and suction service for compatible liquids. NOT for compressible products such as Air, Nitrogen and Steam.

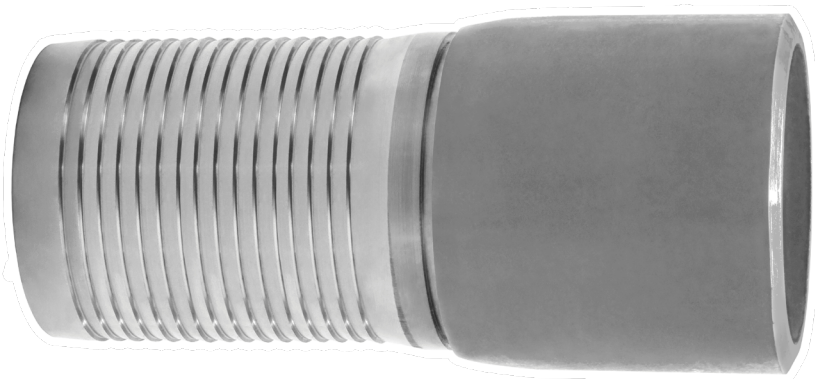
\*All blank end & grooved combination nipples are made using Schedule 40 pipe.

Seal Fast Crimp Combination Nipples are to be used with Seal Fast Ferrules and Crimp Sleeves. They are designed with an Interlock System which allows the Ferrule to be permanently attached to the coupling.

**WORKING PRESSURE 200 PSI**



STEEL



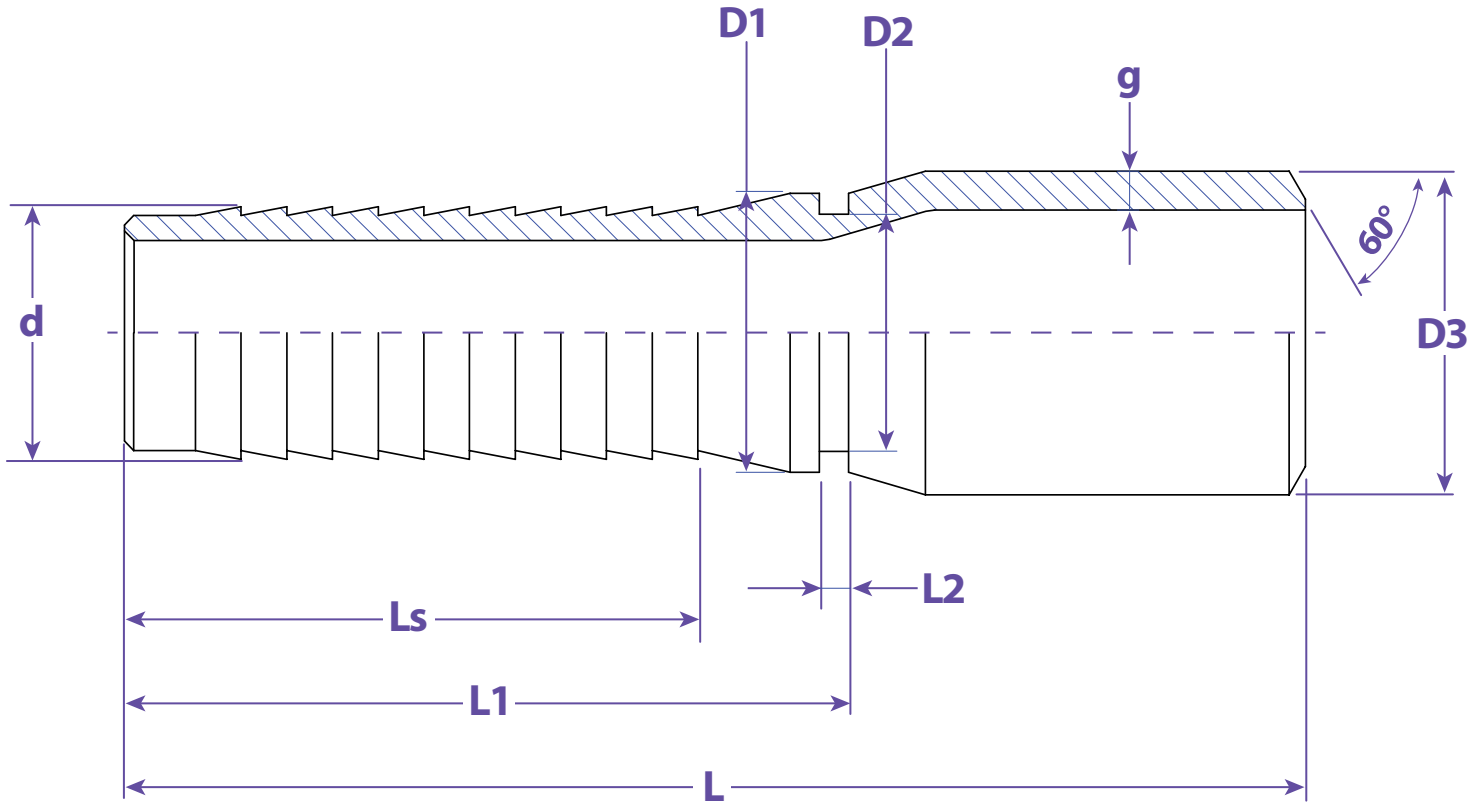
316 SS

**STEEL & STAINLESS 316**

SIZE	STEEL	316 SS
1"	SF100SBC	SF100SSB6C
1-1/4"	---	---
1-1/2"	SF150SBC	SF150SSB6C
2"	SF200SBC	SF200SSB6C
3"	SF300SBC	SF300SSB6C
4"	SF400SBC	SF400SSB6C
6"	SF600SBC	SF600SSB6C



Information contained on this page is for general information purposes only. Seal Fast Inc. assumes no responsibility for errors or omissions for this product.



Dimensions								
D	L	L1	Ls	D1	D2	d	g	Part #
1.3386	4.5276	2.6181	2.0079	1.2677	1.1693	1.0354	0.1339	SF100...
1.6811	4.5276	2.6181	2.0276	1.5197	1.4134	1.2795	0.1417	SF125...
1.9134	4.7638	2.7559	2.4016	1.6772	1.5630	1.5354	0.1457	SF150...
2.3937	5.2362	3.1299	2.5591	2.1850	2.0591	2.0315	0.1535	SF200...
2.8740	5.9055	3.5039	2.7559	2.7520	2.6102	2.5315	0.2047	SF250...
3.5000	7.0079	4.3701	3.5433	3.3150	3.1496	3.0315	0.2165	SF300...
4.5000	7.5984	4.6260	3.9764	4.3110	4.1575	4.0315	0.2362	SF400...
6.6260	9.3307	6.1417	5.3346	6.3583	6.1811	6.0472	0.2795	SF600...

<b>TITLE</b> COMBINATION NIPPLES - CRIMP STYLE - WELD BEVEL	
<p><b>DISCLAIMER</b></p> <p>All drawings and specifications are subject to change without notice. Drawings represent general dimensions of our products. Seal Fast cannot guarantee the dimensions of the part will exactly match those in the drawing. This drawing is the property of Seal Fast Inc. Copying or reproduction of this drawing is expressly prohibited.</p>	<p><b>MATERIAL</b></p> <p>SFxxxxSBC Steel Tube SFxxxBSSC6 Stainless Tube 316</p>
<b>DRAWING NOT TO SCALE</b>	<b>PART #</b> SF...SBC, BSS6C

